

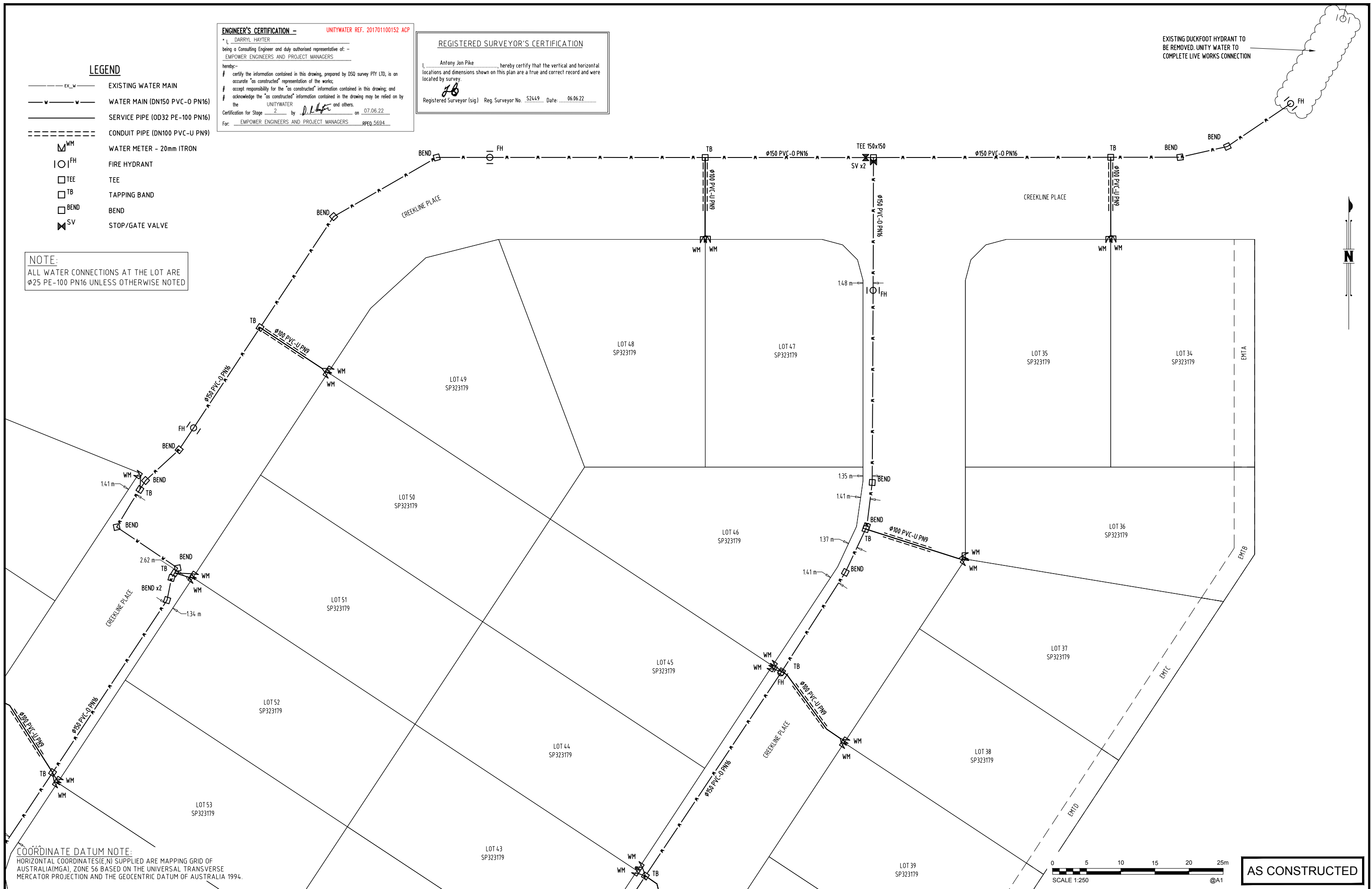
ENGINEER'S CERTIFICATION - UNITYWATER REF. 201701100152 ACP
 I, DARRYL HAYTER
 being a Consulting Engineer and duly authorised representative of -
 EMPOWER ENGINEERS AND PROJECT MANAGERS
 hereby:-
 certify the information contained in this drawing, prepared by DSO survey PTY LTD, is an accurate "as constructed" representation of the works;
 accept responsibility for the "as constructed" information contained in this drawing; and
 acknowledge the "as constructed" information contained in the drawing may be relied on by the UNITYWATER and others.
 Certification for Stage 2 by D.H. on 07.06.22
 For: EMPOWER ENGINEERS AND PROJECT MANAGERS RPEQ 5694

REGISTERED SURVEYOR'S CERTIFICATION
 I, Antony Jon Pike, hereby certify that the vertical and horizontal locations and dimensions shown on this plan are a true and correct record and were located by survey.
AP
 Registered Surveyor (sig) Reg. Surveyor No. S2449 Date: 06.06.22

EXISTING DUCKFOOT HYDRANT TO BE REMOVED. UNITY WATER TO COMPLETE LIVE WORKS CONNECTION

- LEGEND**
- EX_W --- EXISTING WATER MAIN
 - WATER MAIN (DN150 PVC-D PN16)
 - SERVICE PIPE (OD32 PE-100 PN16)
 - CONDUIT PIPE (DN100 PVC-U PN9)
 - WM WATER METER - 20mm ITRON
 - FH FIRE HYDRANT
 - TEE TEE
 - TB TAPPING BAND
 - BEND BEND
 - SV STOP/GATE VALVE

NOTE:
 ALL WATER CONNECTIONS AT THE LOT ARE $\phi 25$ PE-100 PN16 UNLESS OTHERWISE NOTED



COORDINATE DATUM NOTE:
 HORIZONTAL COORDINATES (E,N) SUPPLIED ARE MAPPING GRID OF AUSTRALIA (MGA), ZONE 56 BASED ON THE UNIVERSAL TRANSVERSE MERCATOR PROJECTION AND THE GEOCENTRIC DATUM OF AUSTRALIA 1994.

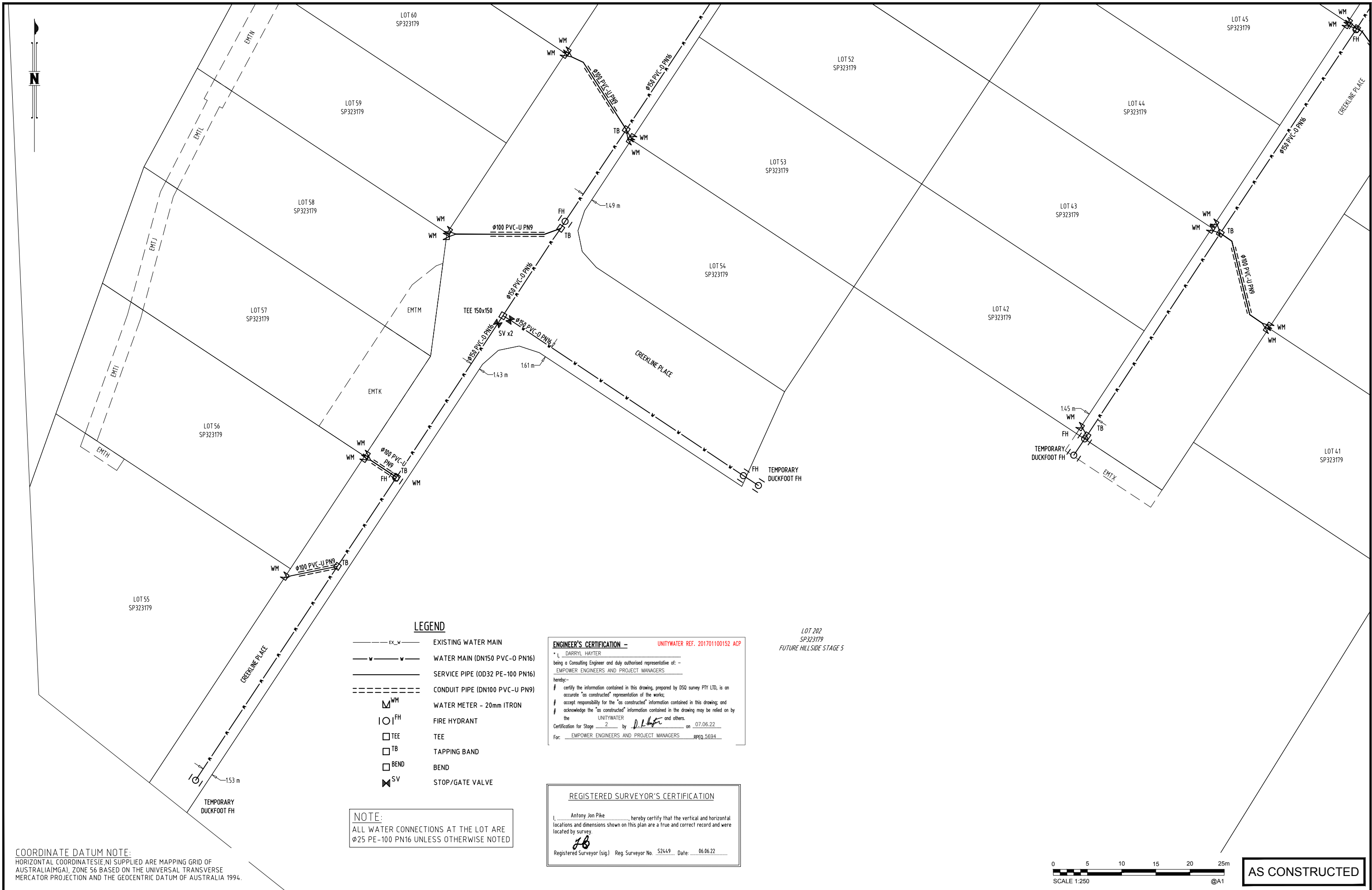
A1	0	06/06/2022	AS CONSTRUCTED DETAILS	BR	LG				
	INDEX	DATE	REVISIONS	DRAWN	CHECKED	PASSED	INITIALS	DATE	

DRAWN	BR	06/06/2022
CHECKED	LG	06/06/2022
PASSED		



Unitywater
 UW201701100152
 WATER RETICULATION WORKS
 HILLSIDE STAGE 2
 MOOLOOLAH VALLEY

SHEET 1 OF 4 SHEETS	SCALE 1:250
REVISION DATE 06/06/2022	REVISION 0
DISCIPLINE CODE C	
DRAWING NO.	



COORDINATE DATUM NOTE:
 HORIZONTAL COORDINATES (E,N) SUPPLIED ARE MAPPING GRID OF AUSTRALIA (MGA), ZONE 56 BASED ON THE UNIVERSAL TRANSVERSE MERCATOR PROJECTION AND THE GEOCENTRIC DATUM OF AUSTRALIA 1994.

LEGEND

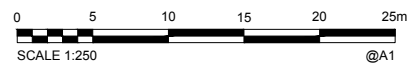
---	EX_W	EXISTING WATER MAIN
— — —	WM	WATER MAIN (DN150 PVC-0 PN16)
— — —	SP	SERVICE PIPE (OD32 PE-100 PN16)
- - - - -	CP	CONDUIT PIPE (DN100 PVC-U PN9)
⊗	WM	WATER METER - 20mm ITRON
⊙	FH	FIRE HYDRANT
⊕	TEE	TEE
⊓	TB	TAPPING BAND
⊘	BEND	BEND
⊗	SV	STOP/GATE VALVE

NOTE:
 ALL WATER CONNECTIONS AT THE LOT ARE ϕ 25 PE-100 PN16 UNLESS OTHERWISE NOTED

ENGINEER'S CERTIFICATION - UNITYWATER REF. 201701100152 ACP
 I, DARRYL HAYTER, being a Consulting Engineer and duly authorised representative of: EMPOWER ENGINEERS AND PROJECT MANAGERS hereby: certify the information contained in this drawing, prepared by DSO survey PTY LTD, is an accurate "as constructed" representation of the works; accept responsibility for the "as constructed" information contained in this drawing; and acknowledge the "as constructed" information contained in the drawing may be relied on by the UNITYWATER and others.
 Certification for Stage 2 by D.H. on 07.06.22
 For: EMPOWER ENGINEERS AND PROJECT MANAGERS RPEQ 5694

REGISTERED SURVEYOR'S CERTIFICATION
 I, Antony Jan Pike, hereby certify that the vertical and horizontal locations and dimensions shown on this plan are a true and correct record and were located by survey.
 J.B.
 Registered Surveyor (sig) Reg. Surveyor No. 52449 Date: 06.06.22

LOT 202
 SP323179
 FUTURE HILLSIDE STAGE 5



AS CONSTRUCTED

A1	0	06/06/2022	AS CONSTRUCTED DETAILS	BR	LG				
	INDEX	DATE	REVISIONS	DRAWN	CHECKED	PASSED	INITIALS	DATE	

Empower ENGINEERS & PROJECT MANAGERS
 ABN 23 010 743 692

Unitywater

Unitywater
 UW201701100152
 WATER RETICULATION WORKS
 HILLSIDE STAGE 2
 MOOLOOLAH VALLEY

SHEET 2 OF 4 SHEETS	SCALE 1:250
REVISION DATE 06/06/2022	REVISION 0
DISCIPLINE CODE C	
DRAWING NO.	