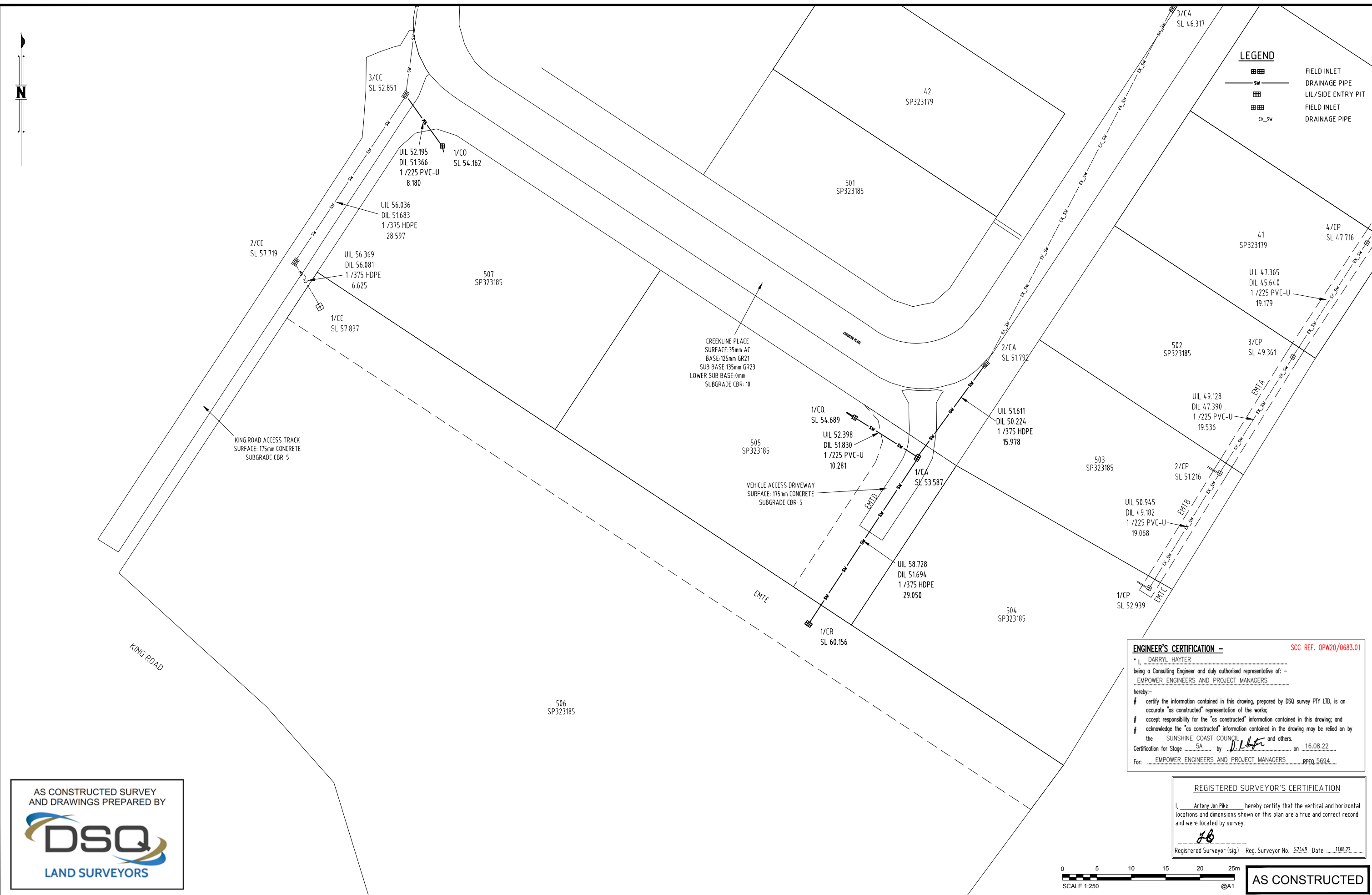




**LEGEND**

	FIELD INLET
	DRAINAGE PIPE
	LIL/SIDE ENTRY PIT
	FIELD INLET
	DRAINAGE PIPE



KING ROAD ACCESS TRACK  
SURFACE: 175mm CONCRETE  
SUBGRADE CBR: 5

CREEKLINE PLACE  
SURFACE: 35mm AC  
BASE: 125mm GR21  
SUB BASE: 135mm GR23  
LOWER SUB BASE: 0mm  
SUBGRADE CBR: 10

VEHICLE ACCESS DRIVEWAY  
SURFACE: 175mm CONCRETE  
SUBGRADE CBR: 5

**ENGINEER'S CERTIFICATION -** SCC REF. OPW20/0683.01

I, DARRYL HAYTER  
being a Consulting Engineer and duly authorised representative of: -  
EMPOWER ENGINEERS AND PROJECT MANAGERS  
hereby:-  
# certify the information contained in this drawing, prepared by DSQ SURVEY PTY LTD, is an accurate "as constructed" representation of the works;  
# accept responsibility for the "as constructed" information contained in this drawing; and  
# acknowledge the "as constructed" information contained in the drawing may be relied on by the SUNSHINE COAST COUNCIL and others.  
Certification for Stage 5A by D.H. on 16.08.22  
For: EMPOWER ENGINEERS AND PROJECT MANAGERS RPEQ 5694

**REGISTERED SURVEYOR'S CERTIFICATION**

I, Anthony Jon Pike hereby certify that the vertical and horizontal locations and dimensions shown on this plan are a true and correct record and were located by survey.

AB  
Registered Surveyor (sig) Reg. Surveyor No. 52449 Date: 11.08.22



**AS CONSTRUCTED**

AS CONSTRUCTED SURVEY AND DRAWINGS PREPARED BY

<b>A1</b>	0	10/08/2022	AS CONSTRUCTED DETAILS	LG	BS			
	INDEX	DATE	REVISIONS	DRAWN	CHECKED	PASSED	INITIALS	DATE

DRAWN	LG	10/08/2022
CHECKED	BS	10/08/2022
PASSED		
INITIALS		DATE

ABN 23 020 743 692

SUNSHINE COAST COUNCIL  
DRAINAGE  
HILLSIDE MOOLOOLAH VALLEY STAGE 5A  
COUNCIL REFERENCE: OPW20/0683.01

SCALE	1:250
SHEET 1 OF 1 SHEETS	
DRAWING NO.	