

**WARNING : Folded or Mutilated Plans will not be accepted.
Plans may be rolled.
Information may not be placed in the outer margins.**

723544437

EL 400 \$2,300.73
19/09/2024 10:29:01

(Dealing No.)

4. Lodged by

(Include address, phone number, email, reference, and Lodger Code)

I. Existing		Created		
Title Reference	Description	New Lots	Road	Secondary Interests
51282062	Lot 201 on SP323179	203 & 401-403	New Rd	-
51319915	Lot 3 on SP342751	401-413 & 901	New Rd	-

MORTGAGE ALLOCATIONS

Mortgage	Lots Fully Encumbered	Lots Partially Encumbered
719493124	203, 401-413 & 901	-

ADMINISTRATIVE ADVICE ALLOCATIONS

Administrative Advice	Lots to be Encumbered
710960178	203, 401-413 & 901

403
401 & 402
404-413 & 901
203

Por's 169 & 172
Por's 169, 170 & 172
Por 172
Por's 169 & 170

Lots

Orig

2. Orig Grant Allocation :

3. References :

Dept File :
Local Govt : POS24/0146
Surveyor : 14368 St4

5. Passed & Endorsed :

By : DSQ PTY LTD
Date : ACN 615 043 251
7/08/2024
Signed : *JH*
Designation : Liaison Officer

6. Building Format Plans only.

I certify that :
* As far as it is practical to determine, no part of the building shown on this plan encroaches onto adjoining lots or road;
* Part of the building shown on this plan encroaches onto adjoining lots and road

Cadastral Surveyor/Director* Date
* delete words not required

7. Lodgement Fees :

Survey Deposit \$
Lodgement \$
___New Titles \$
Photocopy \$
Postage \$
TOTAL \$

8. Insert Plan Number

SP335105

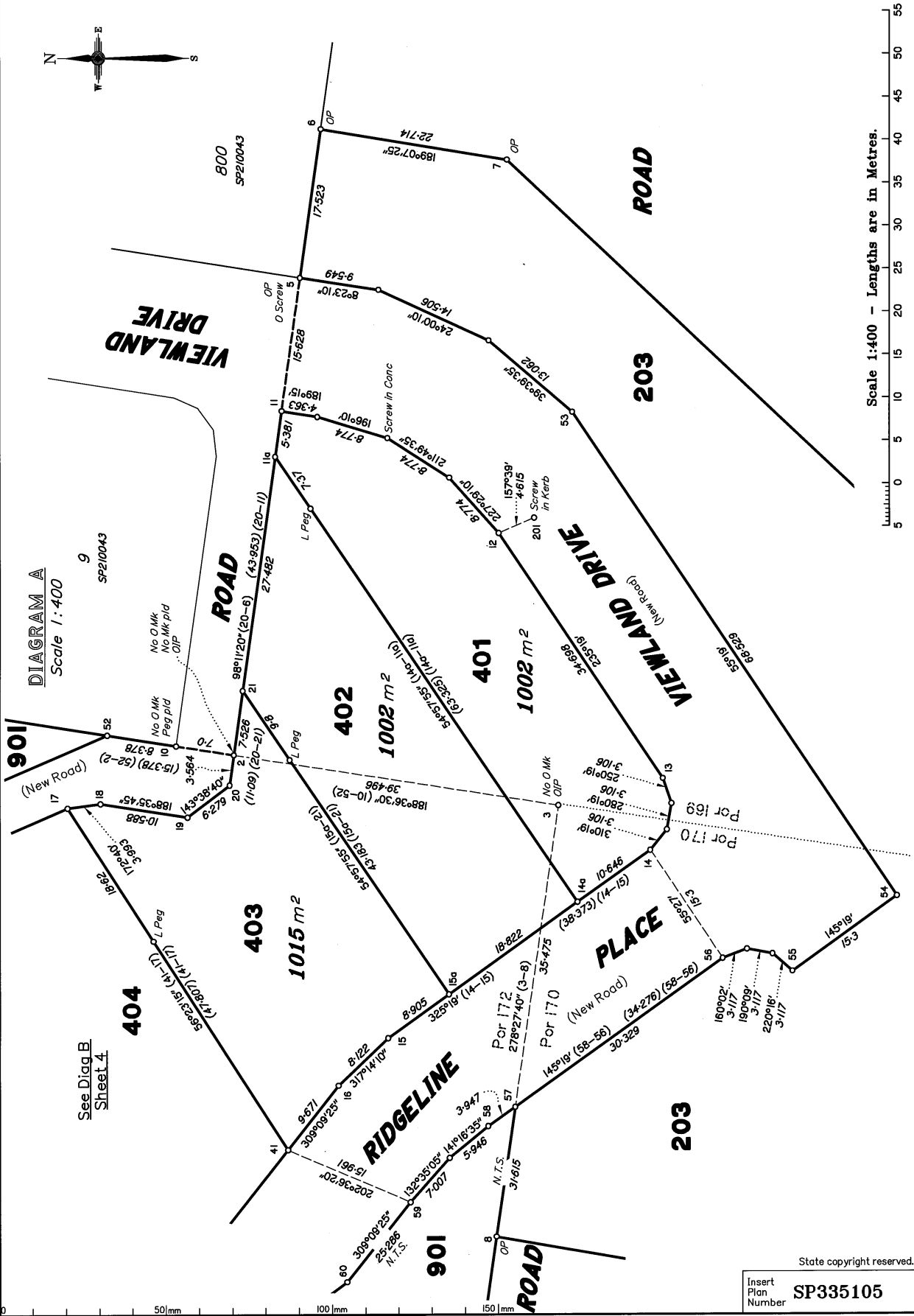
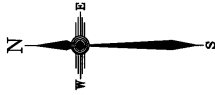
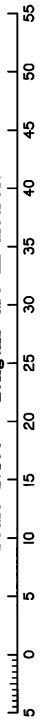


DIAGRAM A
Scale 1:400

See Diag B
Sheet 4

Scale 1:400 - Lengths are in Metres.



State copyright reserved.

Insert Plan Number SP335105

DIAGRAM B

Scale 1:400

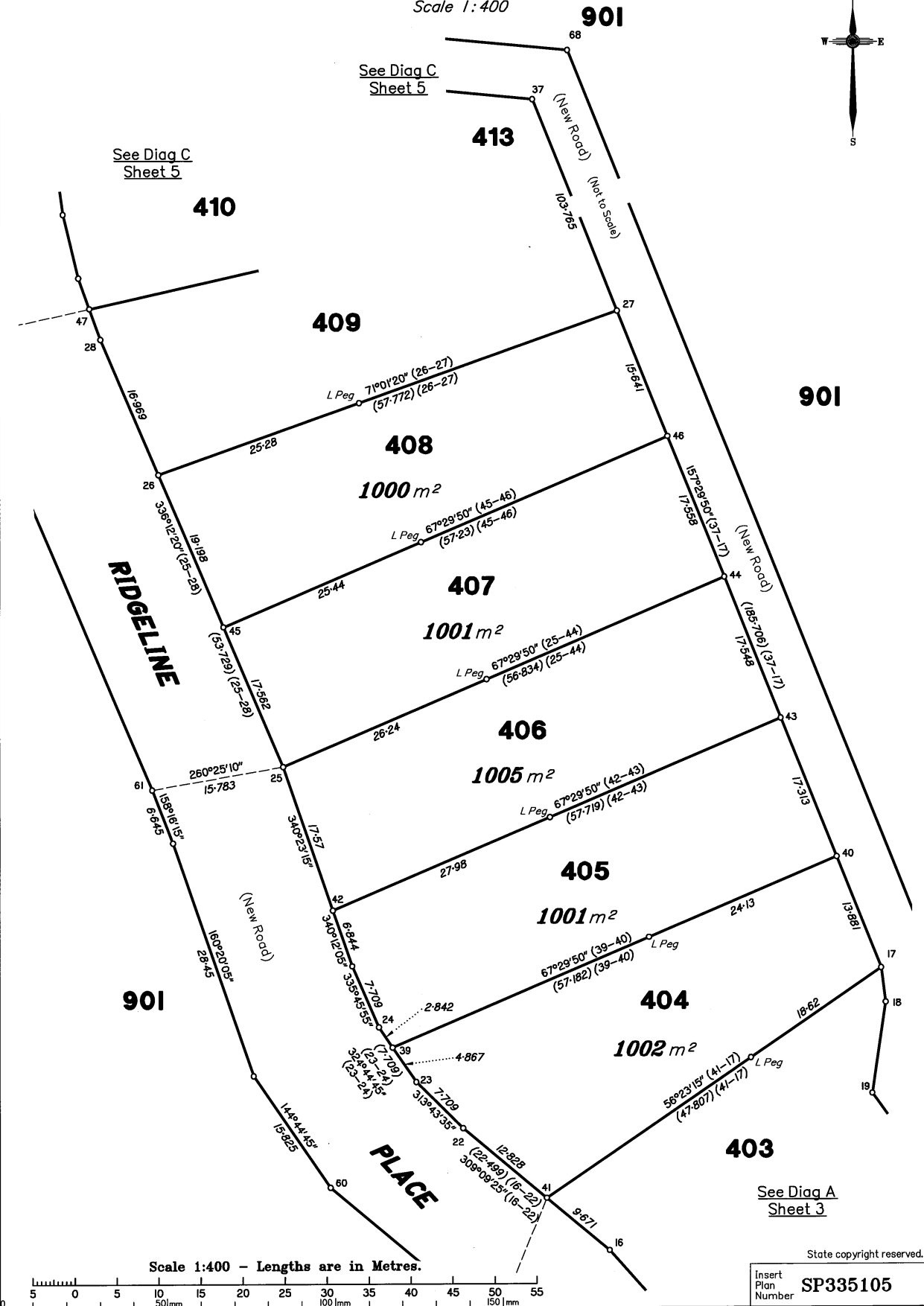
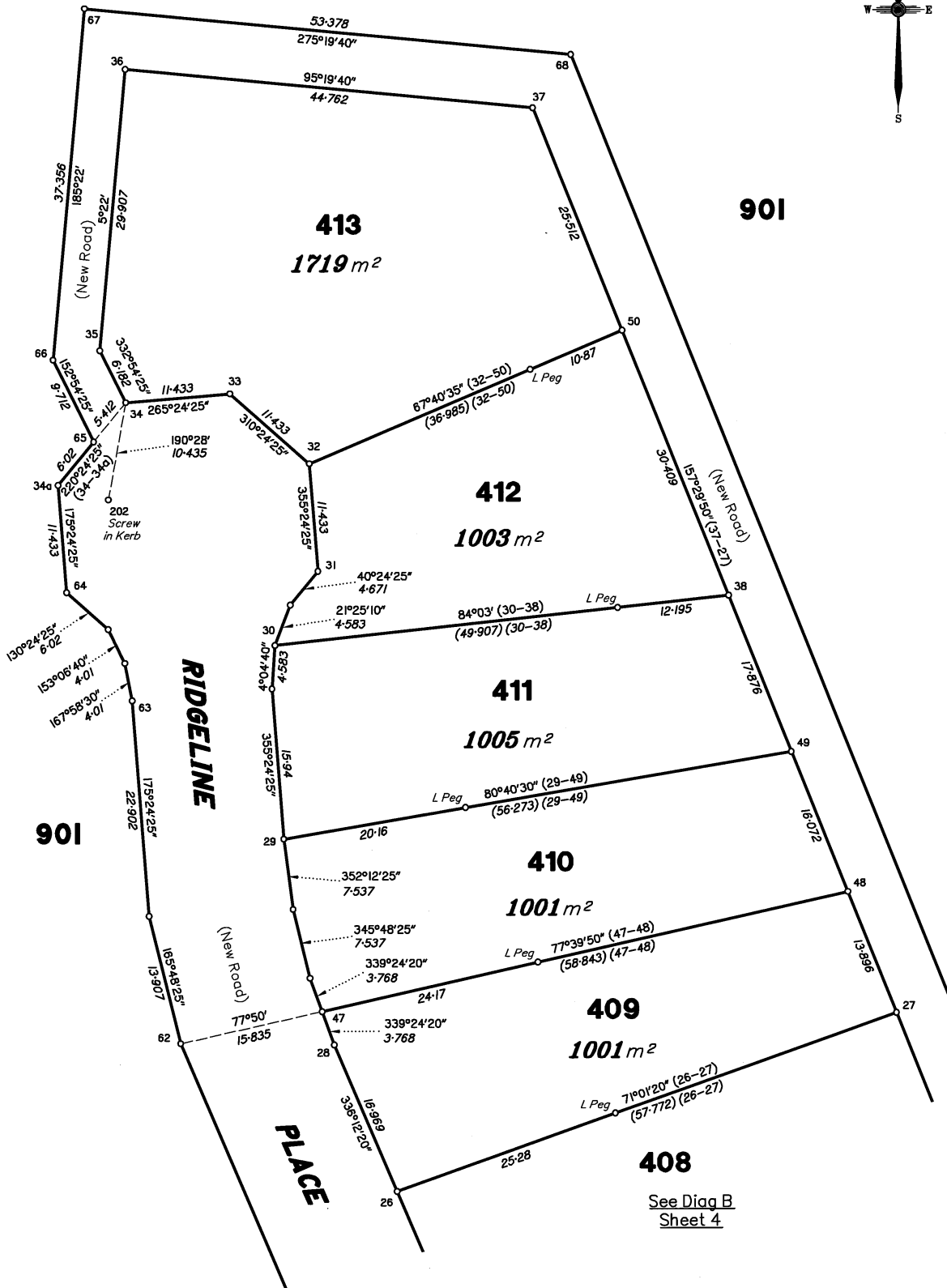
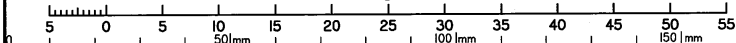


DIAGRAM C

Scale 1:400



Scale 1:400 - Lengths are in Metres.



State copyright reserved.

Insert Plan Number **SP335105**

SURVEY REPORT SP335105

SP335105 shows the reconfiguration of Lot 201 on SP323179 and Lot 3 SP342751 into 14 lots and new road.

The meridian of the survey is MGA2020 Zone 56 from GNSS measurements and Auspos adjustment.

Corner and/or Reference marks shown on previous plans have been used to reinstate stns 2-9 & 51.

Measurements made between the reinstated corners agreed with those shown on the previous plans.

REFERENCE MARKS

STN	TO	BEARING	DIST	ORIGIN	
2	OIP	279°35'50"	1.024	17/RP848008	Removed During Construction
3	OIP	216°05'	1.22	5/RP154403	Removed During Construction
4	Star Picket	20°15'	15.68		
5	Screw in Kerb	310°41'	4.845		
5	O Screw in Kerb	322°44'	5.657	4/SP314096	
5	Screw in Kerb	347°20'	11.245		
6	I Pin	237°06'	1.285		
8	I Pin	186°0'	1.99		
9	OIP	172°02'	0.535	1/SP314096	
10	I Pin	334°52'	0.65		
11	Screw in Conc	82°20'	1.475		
12	Screw in Kerb	149°53'	10.945		
13	Screw in Kerb	126°10'	4.695		
14	Screw in Kerb	267°05'	5.34		
15	Screw in Kerb	241°30'	4.765		
16	I Pin	123°16'	1.81		
17	I Pin	97°28'	7.87		
20	Screw in Kerb	12°15'	3.955		
20	Star Picket	58°19'	4.45		
24	Screw in Kerb	204°38'	5.3		
27	Screw in Conc	67°27'	7.935		
28	Screw in Kerb	234°01'	4.505		
30	Screw in Kerb	276°15'	4.505		
31	Screw in Kerb	253°33'	7.545		
36	Screw in Conc	325°19'	0.705		
36	I Pin	328°01'	13.47		
37	Screw in Conc	42°04'	0.88		
44	I Pin	30°0'	13.27		
45	Screw in Kerb	244°50'	4.495		
50	I Pin	13°54'	9.92		
51	OIP	132°20'35"	3.723	16/RP158360	
53	Screw in Kerb	265°59'	8.605		
54	Screw in Kerb	326°32'	4.36		
55	Screw in Kerb	181°49'	5.865		
56	I Pin	229°41'	0.55		
56	Screw in Kerb	5°47'	6.77		
59	Screw in Kerb	82°15'	5.925		
60	Screw in Kerb	340°54'	18.41		
65	I Pin	332°09'	4.715		
201	Screw in Kerb	at	Stn		
202	Screw in Kerb	at	Stn		

MGA COORDINATES GDA 2020

Station	East	North	Zone	P.U.	Lineage	Method	Remarks
201	495 298.411	7 039 045.279	56	0-018	Derived	Auspos	Screw in Kerb
202	495 147.267	7 039 231.514	56	0-020	Derived	Auspos	Screw in Kerb