

**WARNING : Folded or Mutilated Plans will not be accepted.
Plans may be rolled.
Information may not be placed in the outer margins.**

723544446

EL 400 \$6,831.38
19/09/2024 10:33:44

(Dealing No.)

4. Lodged by

(Include address, phone number, email, reference, and Lodger Code)

I. Existing		Created		
Title Reference	Description	New Lots	Road	Secondary Interests
.	Lot 203 on SP335105	301-311, 330-337, 345, 346 & 900	New Rd	-
.	Lot 204 on SP338426	310-330, 338-345, 347-351 & 900	New Rd	-

MORTGAGE ALLOCATIONS

Mortgage	Lots Fully Encumbered	Lots Partially Encumbered
719493124	301-351 & 900	

ENCUMBRANCE EASEMENT ALLOCATIONS

Easement	Lots to be Encumbered
602166052 (Emt A on AP21799)	900

ADMINISTRATIVE ADVICE ALLOCATIONS

Administrative Advice	Lots to be Encumbered
710960178	LOTS 301-351 & 900

900 301-351	Por I69 & Por I70 Por I70
Lots	Orig

2. Orig Grant Allocation :

3. References :

Dept File :
Local Govt : POS24/0146
Surveyor : 14368 St3

5. Passed & Endorsed :

By : DSQ PTY LTD
ACN 615 043 251
Date : 7/08/2024
Signed : *JH*
Designation : Liaison Officer

6. Building Format Plans only.

I certify that :
* As far as it is practical to determine, no part of the building shown on this plan encroaches onto adjoining lots or road;
* Part of the building shown on this plan encroaches onto adjoining lots and road

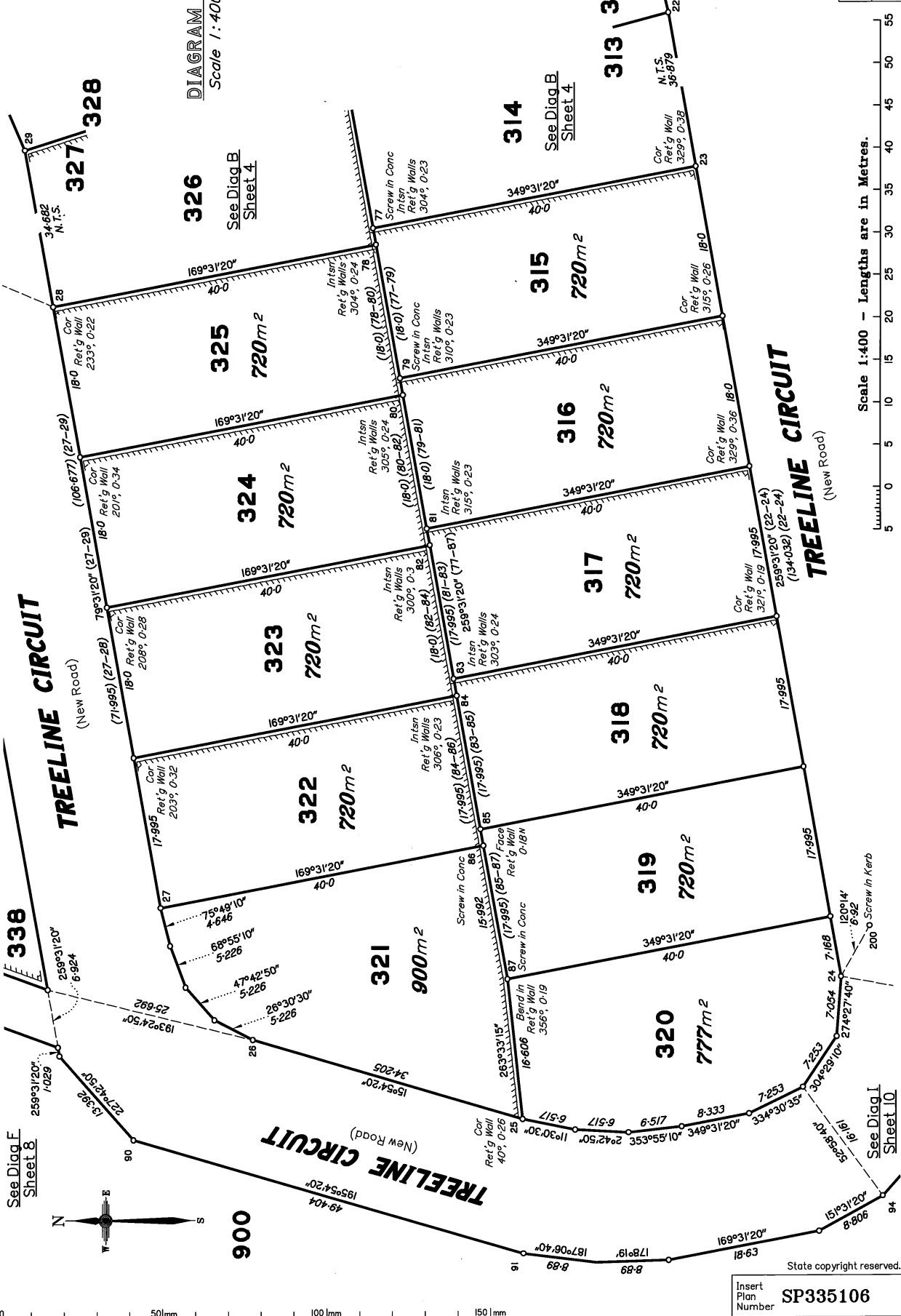
Cadastral Surveyor/Director* Date
* delete words not required

7. Lodgement Fees :

Survey Deposit \$
Lodgement \$
___New Titles \$
Photocopy \$
Postage \$
TOTAL \$

8. Insert Plan Number

SP335106



Scale 1:400 - Lengths are in Metres.

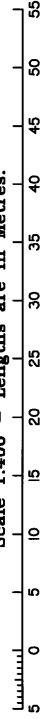
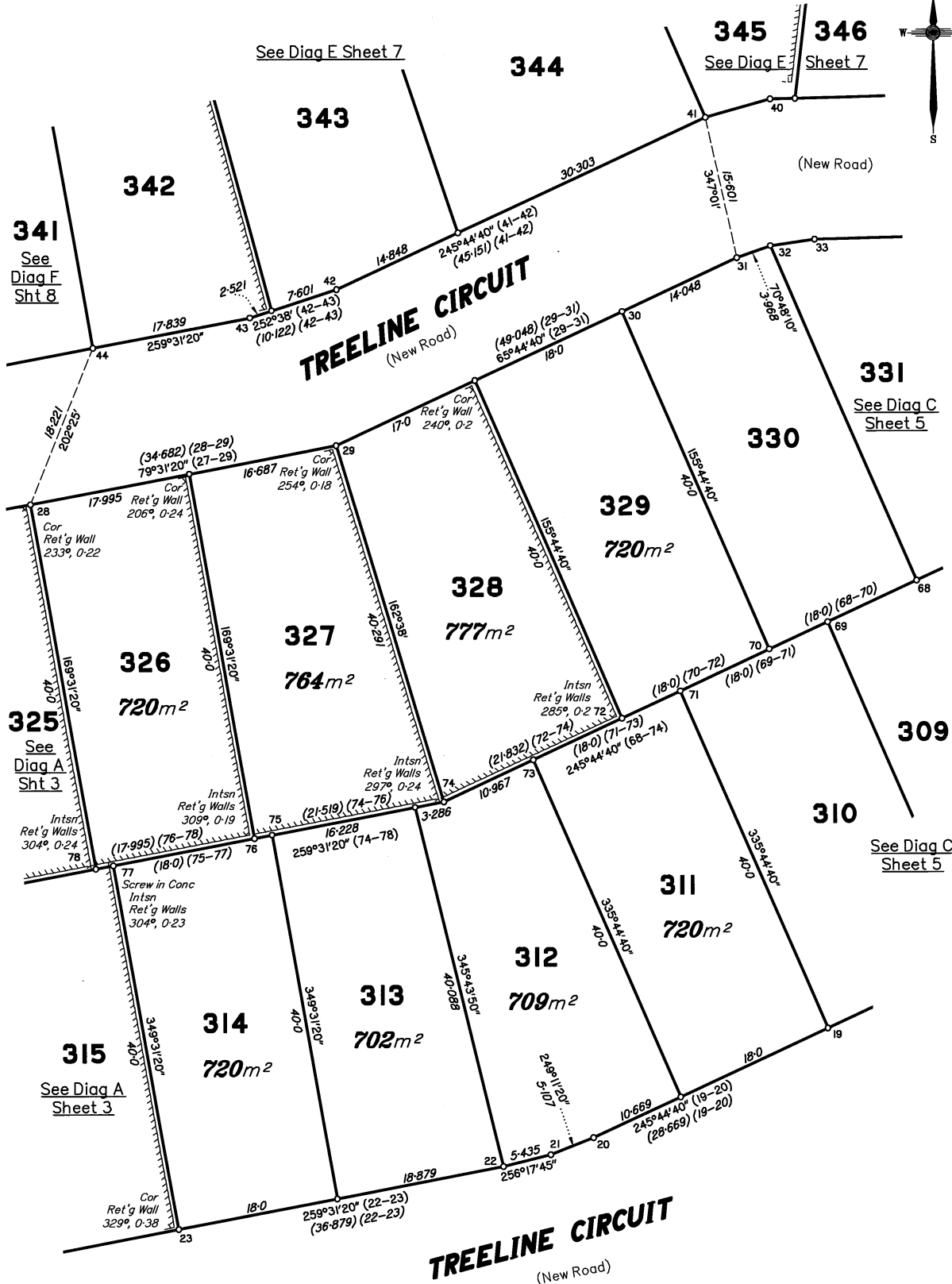


DIAGRAM B

Scale 1:400



341
See
Diag F
Sht 8

345 346
See Diag E Sheet 7

(New Road)

TREELINE CIRCUIT
(New Road)

331
See Diag C
Sheet 5

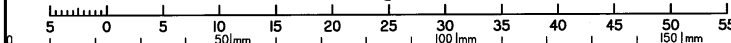
325
See
Diag A
Sht 3

310
See Diag C
Sheet 5

315
See Diag A
Sheet 3

TREELINE CIRCUIT
(New Road)

Scale 1:400 - Lengths are in Metres.



State copyright reserved.

Insert
Plan
Number SP335106

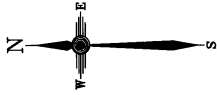


DIAGRAM C
Scale 1:400

TREELINE CIRCUIT
(New Road)

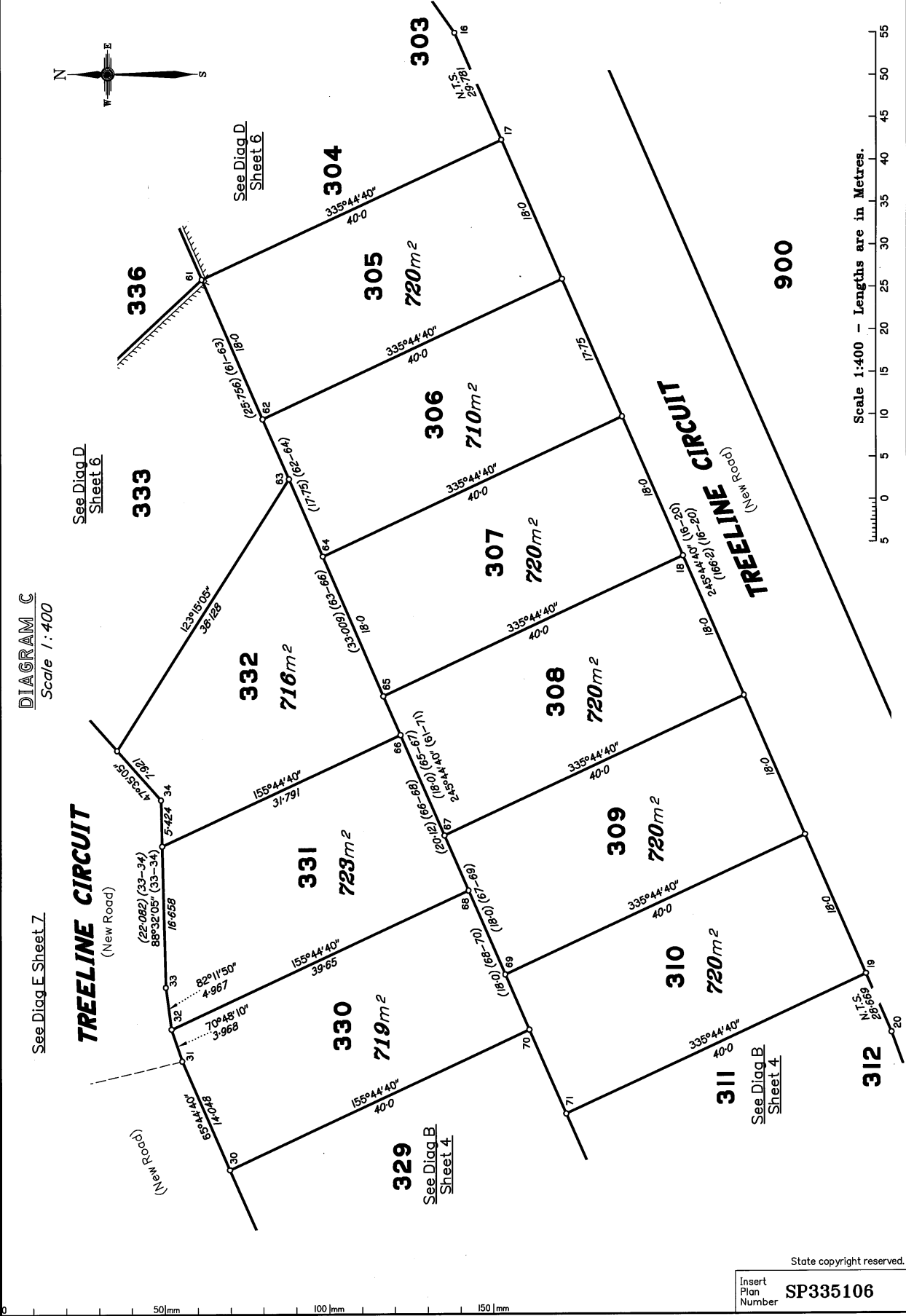
See Diag. E. Sheet Z

See Diag. D. Sheet 6

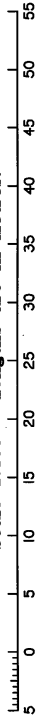
See Diag. D. Sheet 6

See Diag. B. Sheet 4

See Diag. B. Sheet 4



Scale 1:400 - Lengths are in Metres.



State copyright reserved.

Insert Plan Number
SP335106

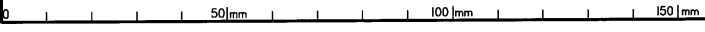
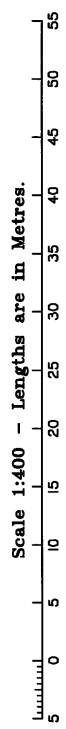
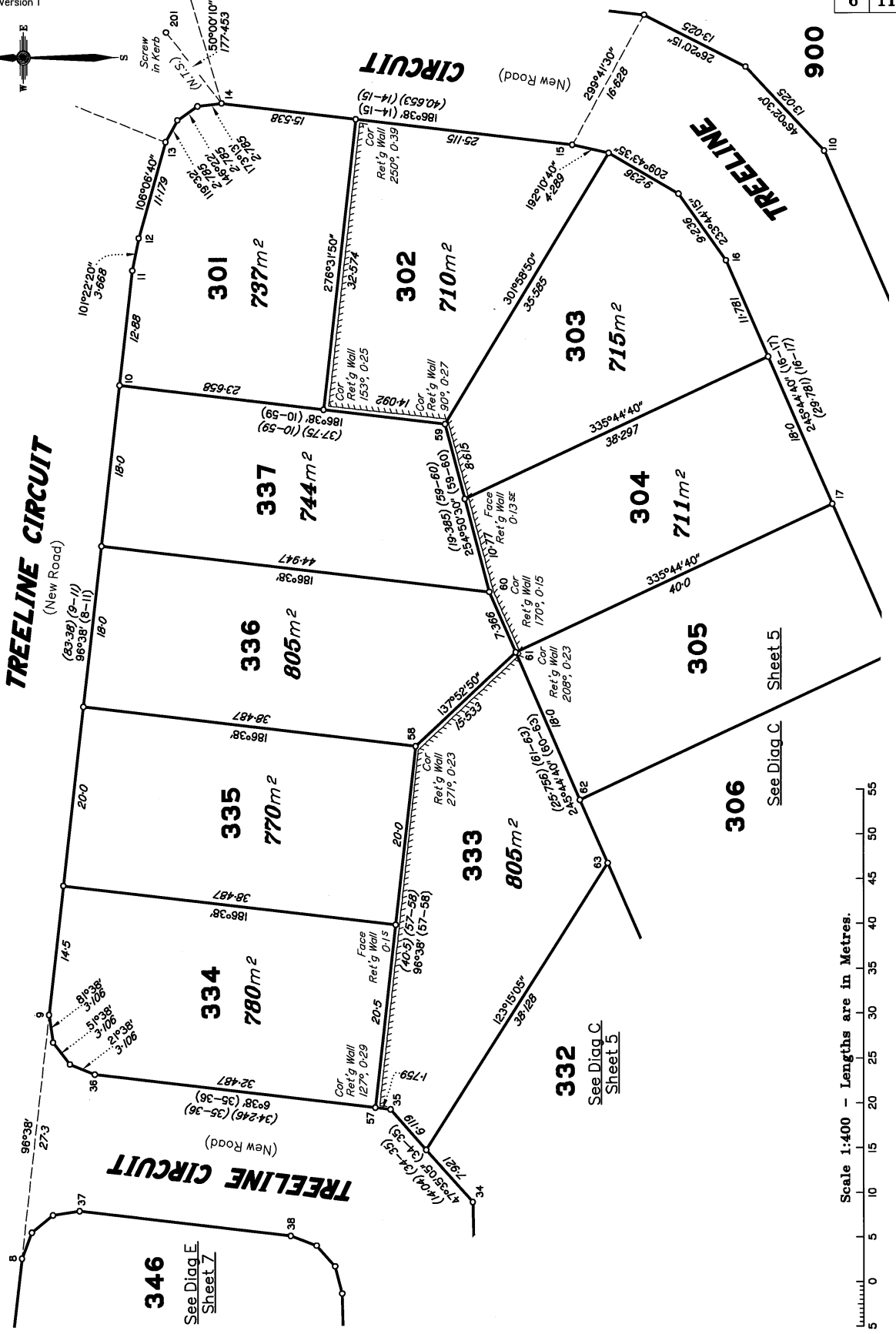




DIAGRAM D
Scale 1:400

TREELINE CIRCUIT

TREELINE CIRCUIT



State copyright reserved.

Insert Plan Number **SP335106**

DIAGRAM E
Scale 1:400

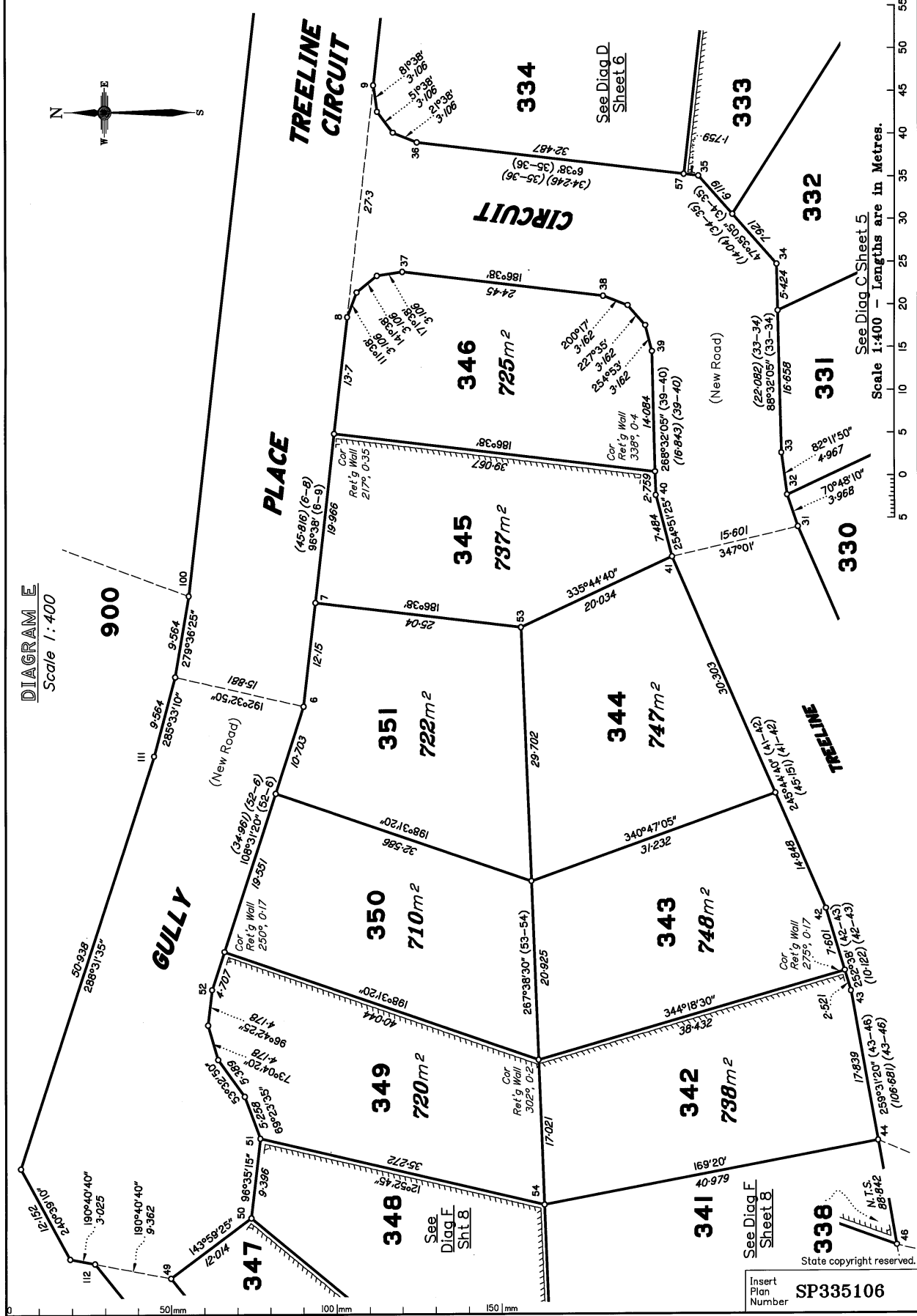
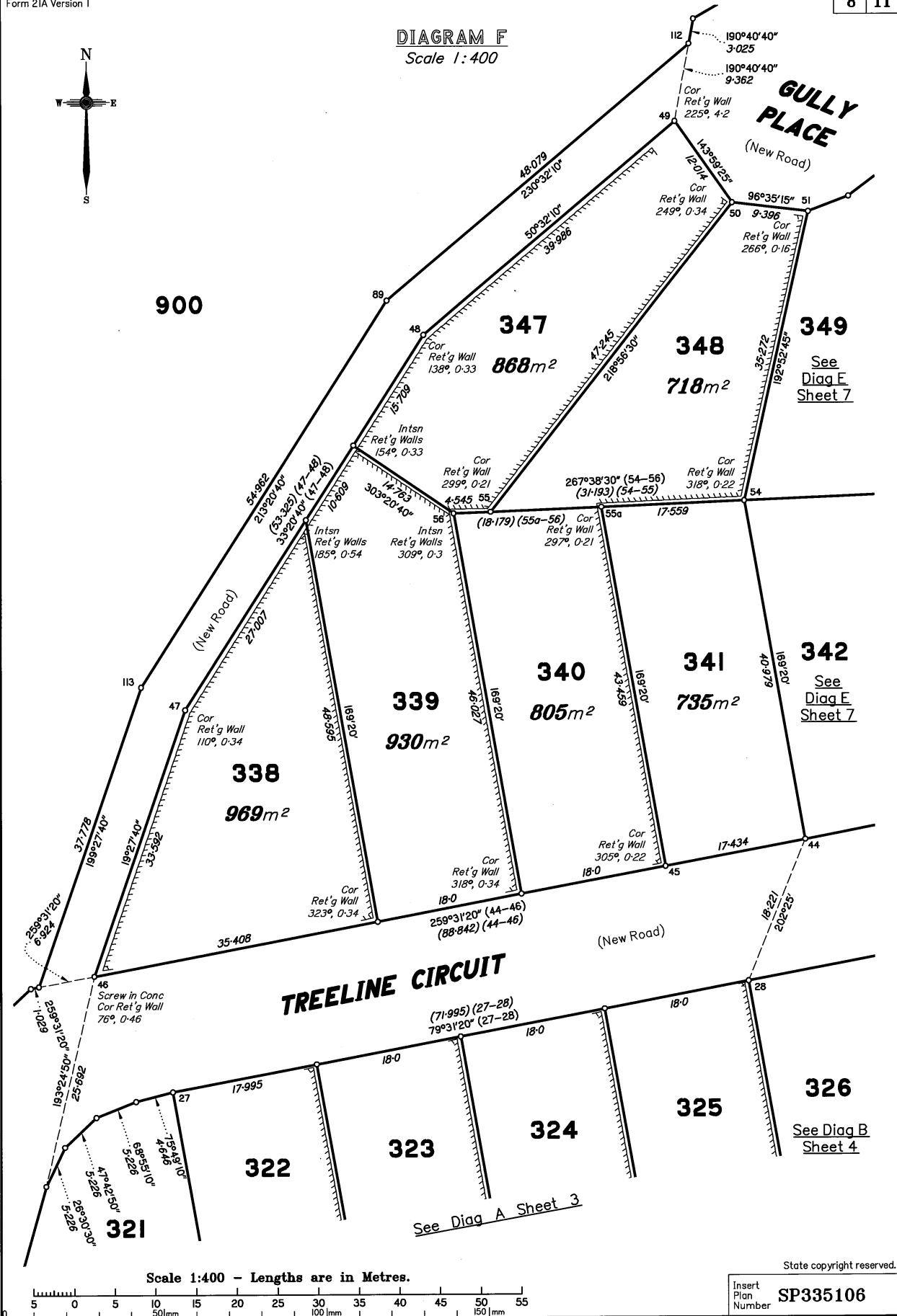


DIAGRAM F
Scale 1:400



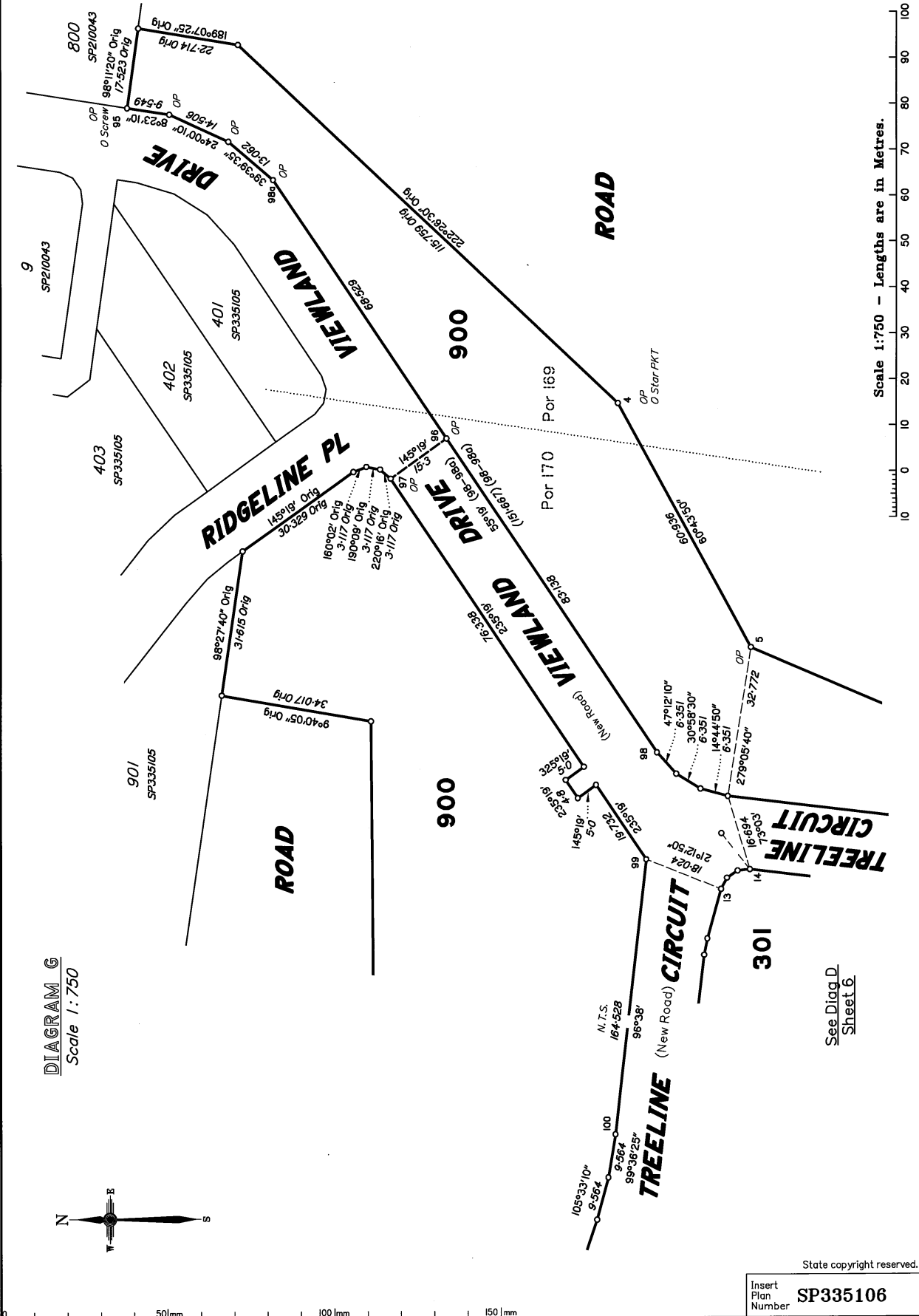
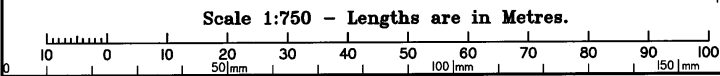
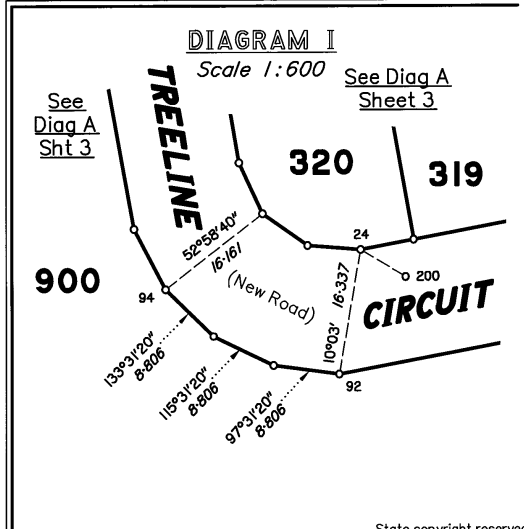
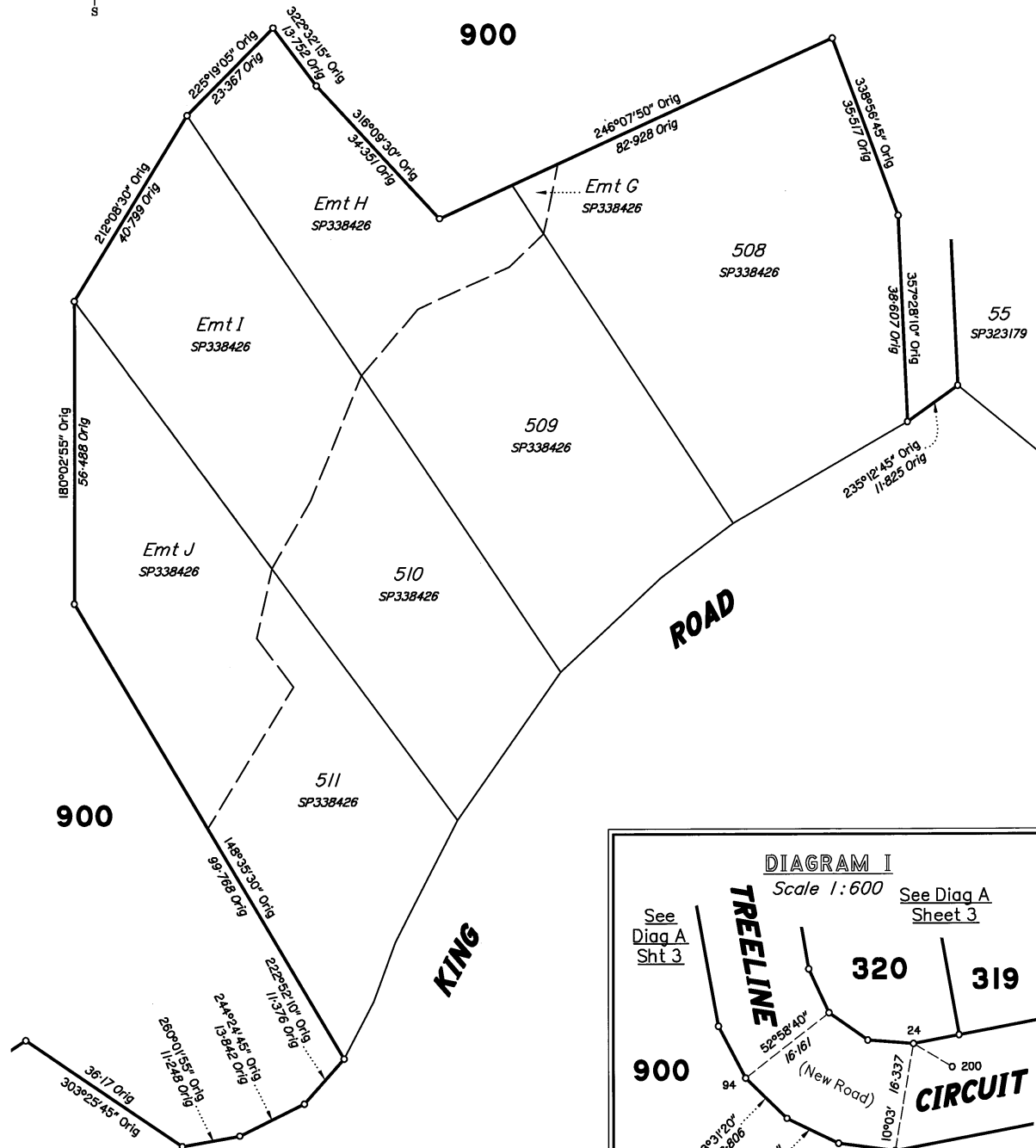


DIAGRAM H

Scale 1:750



State copyright reserved.

Insert Plan Number **SP335106**

SURVEY REPORT SP335106

SP335106 shows the reconfiguration of Lot 203 on SP335105 & Lot 204 on SP338426 into 52 lots.

The meridian of the survey is MGA 2020 Zone 56 vide GNSS measurements and Auspos adjustment.

Corner & Reference marks shown on previous plans have been used to reinstate the existing corners of the subject land.

Measurements made between the reinstated corners agreed with those shown on the previous plans.

MGA COORDINATES GDA 2020

Station	East	North	Zone	P.U.	Lineage	Method	Remarks
200	494 855.646	7 038 776.426	56	0-019	Derived	Auspos	Screw in Kerb
201	495 298.411	7 039 045.279	56	0-018	Derived	Auspos	Screw in Kerb

REFERENCE MARKS

STN	TO	BEARING	DIST	ORIGIN
1	OIP	172°02'	0-535	1/SP314096
2	I Pin	190°44'	14-165	
4	O Star Picket	20°15'	15-68	4/SP335105
5	Star Picket	212°42'	35-14	
6	Screw in Kerb	34°18'	5-45	
8	Screw in Kerb	335°38'	5-115	
9	Screw in Kerb	37°48'	5-25	
10	Screw in Kerb	3°38'	4-575	
11	Screw in Kerb	67°34'40"	24-425	
14	Screw in Kerb	125°08'	4-995	
14	Screw in Kerb	83°31'	11-37	
15	Screw in Kerb	73°01'	4-865	
15	Screw in Kerb	100°44'	10-9	
16	Nail in Kerb	158°11'	4-385	
16	Screw in Kerb	161°55'	10-93	
18	Screw in Kerb	156°45'	4-505	
18	Screw in Kerb	148°48'	10-945	
20	Screw in Kerb	135°02'	4-82	
20	Screw in Kerb	173°01'	11-28	
22	Screw in Kerb	171°55'	4-46	
24	Screw in Kerb	115°31'	18-53	
25	Screw in Kerb	274°22'	4-56	
25	Screw in Kerb	280°59'	10-895	
25	I Pin	254°43'20"	34-31	
26	Screw in Kerb	269°33'	4-675	
27	Screw in Kerb	317°18'	5-35	
29	Screw in Kerb	339°46'	5-015	
32	Screw in Kerb	341°09'	4-575	
34	Screw in Kerb	315°40'	6-57	
35	Screw in Kerb	292°25'	5-845	
36	Screw in Kerb	280°01'	4-445	
37	Screw in Kerb	92°07'	4-07	
38	Screw in Kerb	79°09'	4-385	
39	Screw in Kerb	193°28'	4-305	
40	Screw in Kerb	183°50'	4-52	
42	Screw in Kerb	114°29'	5-335	
43	Screw in Kerb	187°06'	4-345	
46	Screw in Kerb	193°57'	3-095	
46	Screw in Conc	288°01'	4-375	
49	Screw in Conc	333°24'	4-515	
49	Screw in Conc	129°27'	6-08	
52	Screw in Kerb	65°34'	6-675	
89	I Pin	81°43'	0-945	
90	Screw in Kerb	153°12'	6-685	
92	Screw in Kerb	40°57'	6-71	
93	I Pin	24°48'	3-96	
96	Screw in Kerb	326°32'	4-36	
97	Screw in Kerb	181°49'	5-865	
98	Screw in Kerb	7°13'	5-9	
99	Screw in Conc	154°05'	4-045	
99	I Pin	134°58'	7-21	
100	Screw in Kerb	178°36'	4-46	
110	I Pin	232°11'	7-04	
111	Screw in Kerb	226°17'	4-975	
112	I Pin	211°53'	3-3	
113	I Pin	212°26'	0-78	
200	Screw in Kerb	at	Stn	
201	Screw in Kerb	at	Stn	